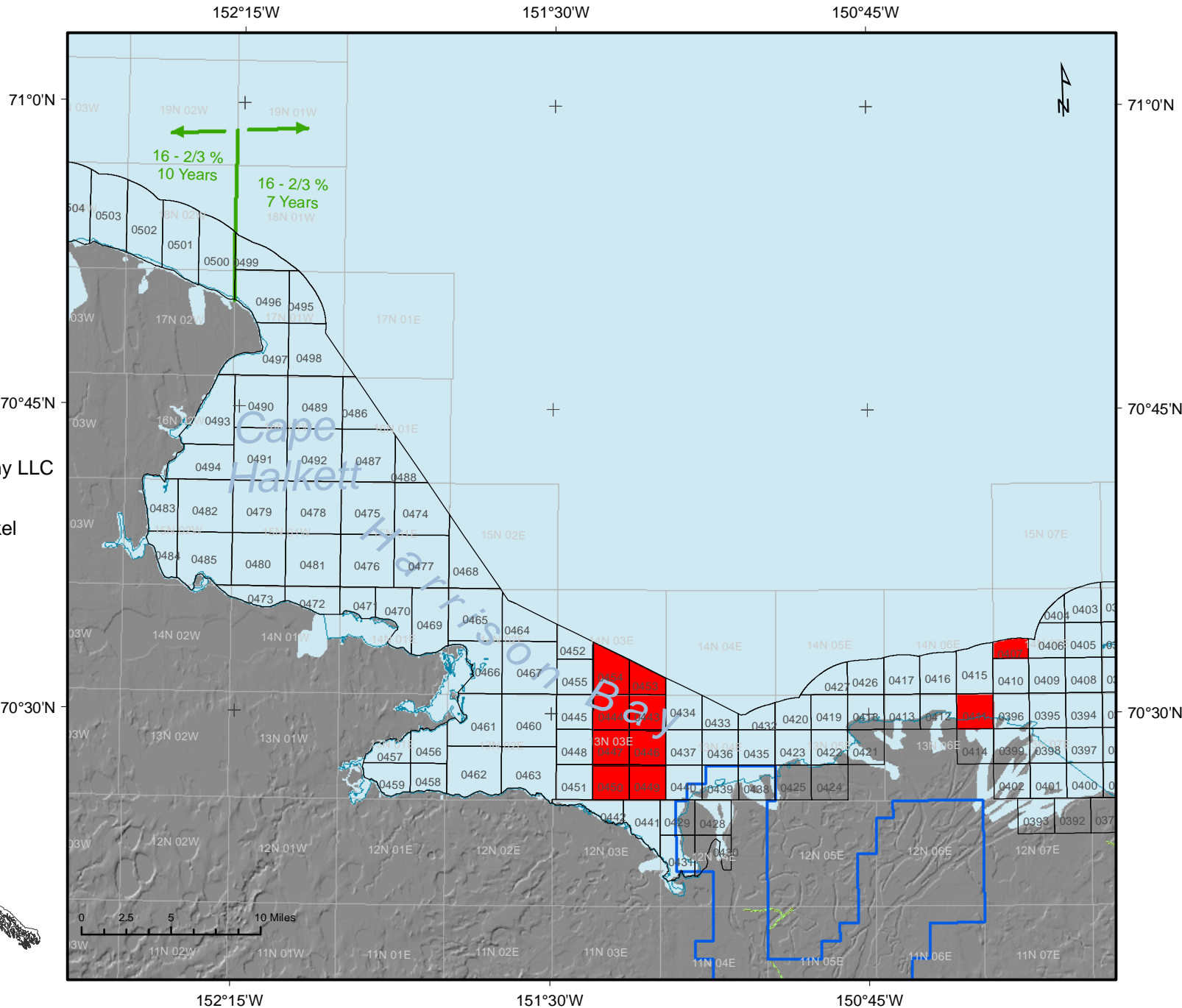


Beaufort Sea  
 Areawide 2010  
 Tract Map No. 1 of 3

**Sale Results**

**Apparent High Bidder**

- GMT Exploration Company LLC
- Samuel H. Cade, D. Donkel
- Sun-West Oil & Gas, Inc.



Alaska Albers Equal Area Conic  
 False Easting: 0.000000  
 Central Meridian: -148.750000  
 Standard Parallel 2: 65.000000

GCS North American 1983  
 False Northing: 0.000000  
 Standard Parallel 1: 55.000000  
 Latitude of Origin: 50.000000

- Sale Boundary
- State/ASRC Settlement Boundary
- Gravel Consideration Boundary
- Trans-Alaska Pipeline
- Sale Tracts
- Royalty Boundary
- Alaska Seaward Boundary
- Roads

This is Not an Official Tract Map. For Informational Purposes Only.

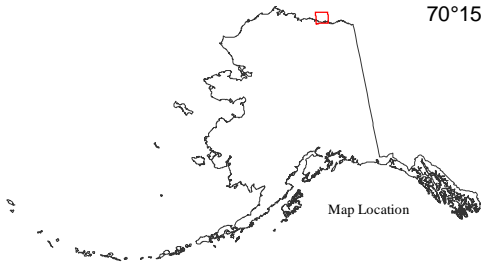
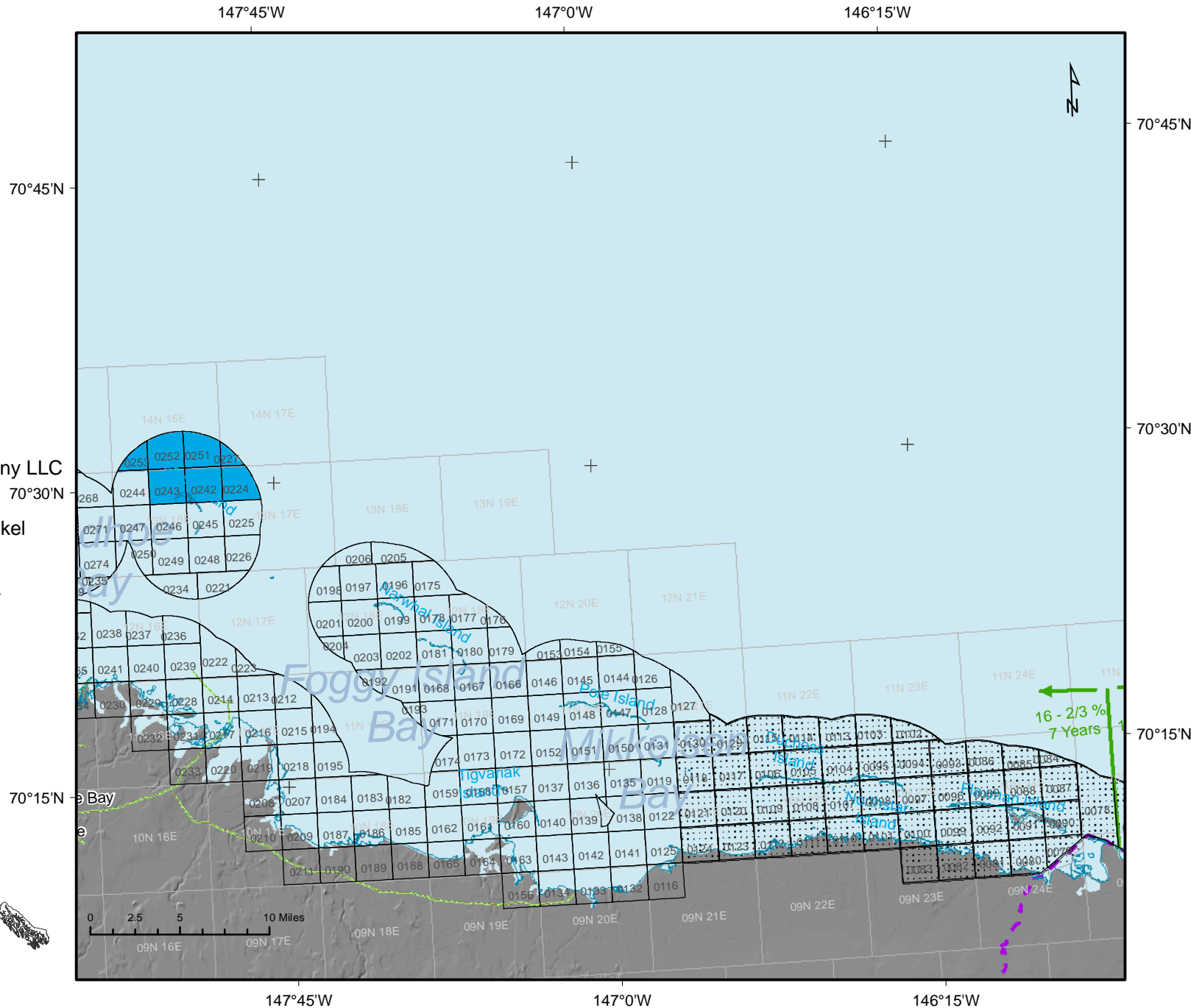
February 24, 2010

Beaufort Sea  
 Areawide 2010  
 Tract Map No. 2 of 3

Sale Results

Apparent High Bidder

- GMT Exploration Company LLC
- Samuel H. Cade, D. Donkel
- Sun-West Oil & Gas, Inc.



Alaska Albers Equal Area Conic  
 False Easting: 0.000000  
 Central Meridian: -148.750000  
 Standard Parallel 2: 65.000000

GCS North American 1983  
 False Northing: 0.000000  
 Standard Parallel 1: 55.000000  
 Latitude of Origin: 50.000000

- Sale Boundary
- State/ASRC Settlement Boundary
- Gravel Consideration Boundary
- Trans-Alaska Pipeline
- Sale Tracts
- Royalty Boundary
- Alaska Seaward Boundary
- Roads

This is Not an Official Tract Map. For Informational Purposes Only.

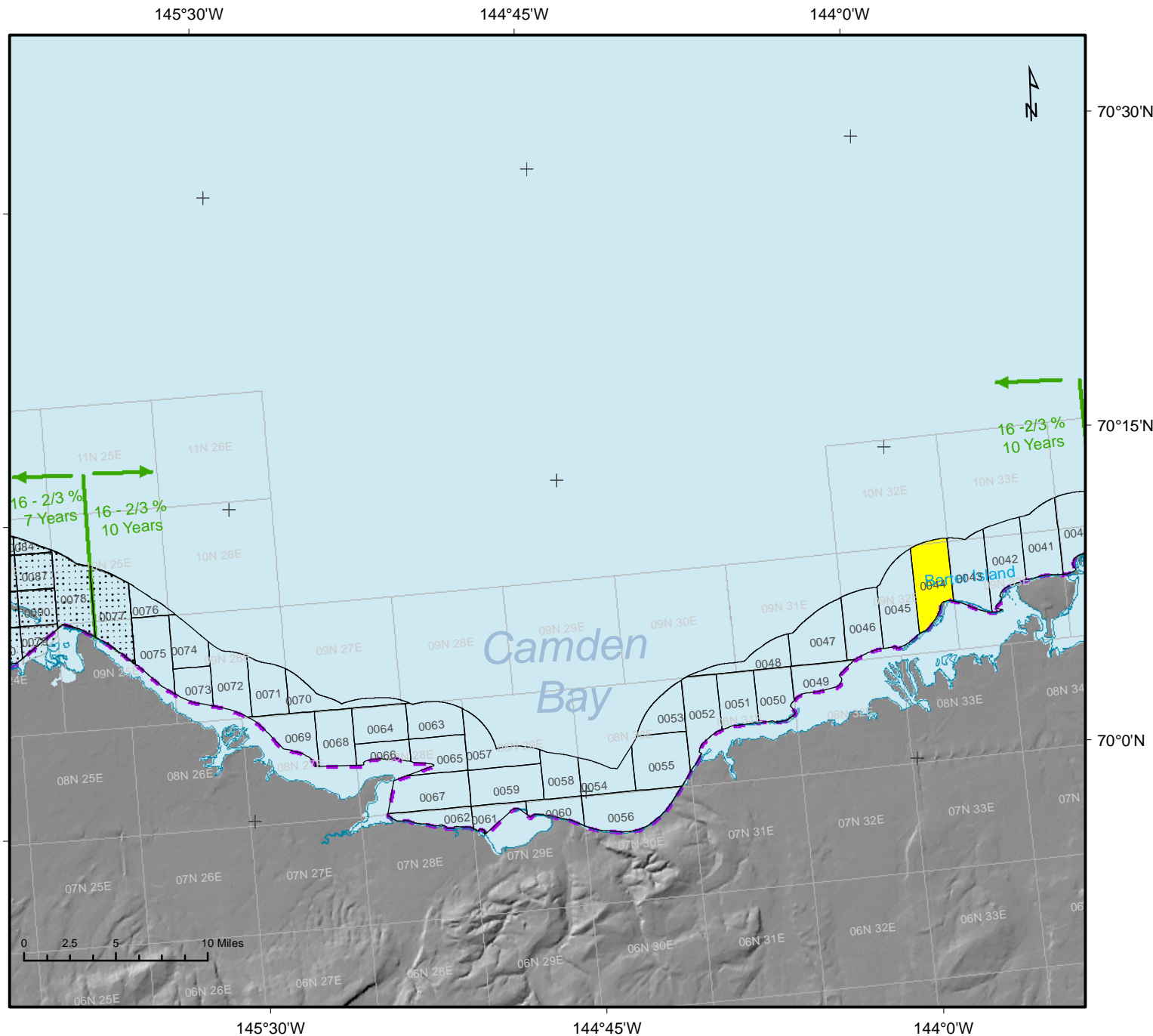
February 24, 2010

Beaufort Sea  
 Areawide 2010  
 Tract Map No. 3 of 3

**Sale Results**

**Apparent High Bidder**

- GMT Exploration Company LLC
- Samuel H. Cade, D. Donkel
- Sun-West Oil & Gas, Inc.



Alaska Albers Equal Area Conic  
 False Easting: 0.000000  
 Central Meridian: -148.750000  
 Standard Parallel 2: 65.000000

GCS North American 1983  
 False Northing: 0.000000  
 Standard Parallel 1: 55.000000  
 Latitude of Origin: 50.000000

- Sale Boundary
- State/ASRC Settlement Boundary
- Gravel Consideration Boundary
- Trans-Alaska Pipeline
- Sale Tracts
- Royalty Boundary
- Alaska Seaward Boundary
- Roads

This is Not an Official Tract Map. For Informational Purposes Only.

February 24, 2010