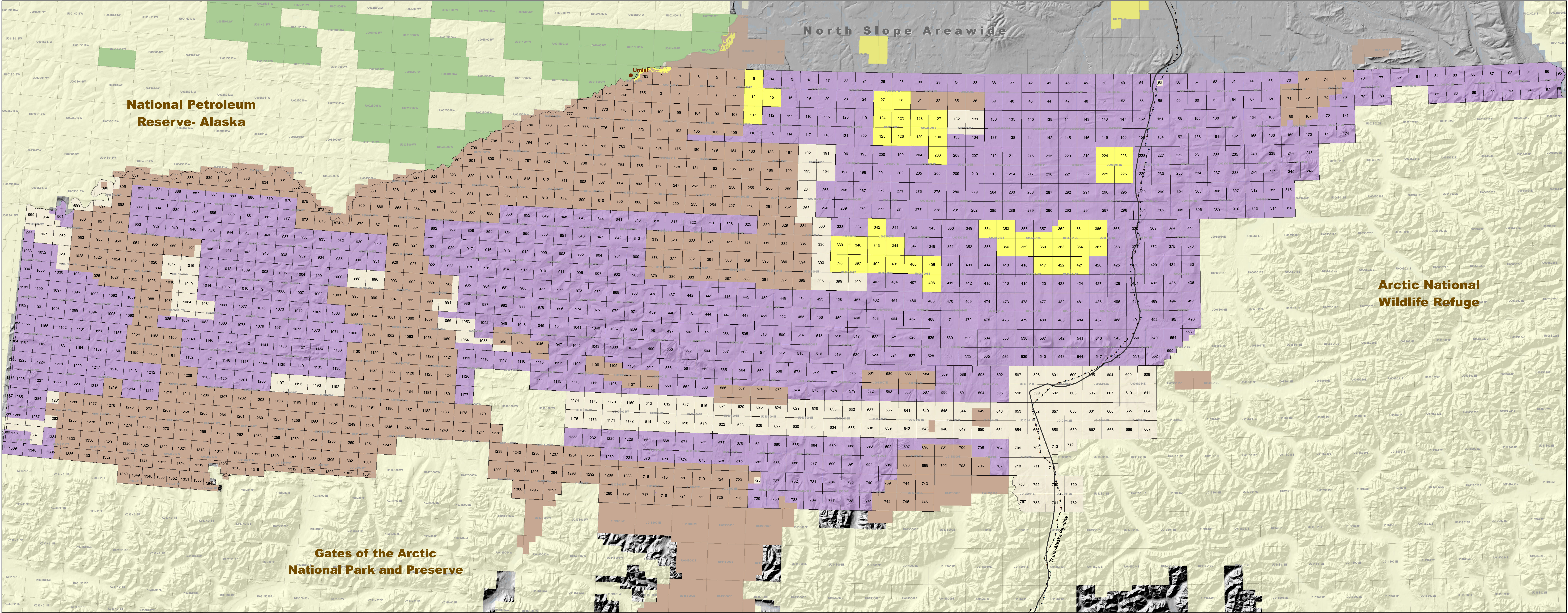


North Slope Foothills Areawide 2015

Competitive Oil and Gas Lease Sale Regional Tract Map

October 5, 2015



This map was created, edited, and published by the State of Alaska, Department of Natural Resources, Division of Oil and Gas, and is for informational purposes only.

The State of Alaska makes no expressed or implied warranties (including warranties of merchantability and fitness) with respect to the character, function, or capabilities of this product or its appropriateness for any user's purposes. In no event will the State of Alaska be liable for any incidental, indirect, special, consequential or other damages suffered by the user or any other person or entity whether from use of the product, any failure thereof or otherwise, and in no event will the State of Alaska's liability to you or anyone else exceed the fee for the product.

**Legend**

Unleased State-Owned Oil and Gas	Non-State Leases
State Oil and Gas Lease	Areawide Sale
Lease Sale Tracts	Federal Land
	Native Land

**\*Bidders are solely responsible for determining the availability of acreage prior to submitting a bid.**

**Various state and federal restrictions apply to portions of the lease sale area.**

**For more information refer to the 2011 North Slope Foothills Areawide Oil and Gas Lease Sale Final Finding of the Director and its supplements at [www.dog.dnr.alaska.gov](http://www.dog.dnr.alaska.gov)**

0 10 20 40 60 80 Kilometers

0 10 20 40 60 80 Miles

Bidders are cautioned to verify land title, land available for leasing, and acreage within a tract prior to bidding. The regional tract map depicts general mineral estate ownership, oil and gas lease activity, and lease sale tract boundaries. This information is current as the date above and is subject to change. For detailed land status, ownership, and land survey information consult land records of the following agencies:

State of Alaska Department of Natural Resources  
<http://dnr.alaska.gov/landresc/>

US Department of Interior Bureau of Land Management  
<http://edms.ak.blm.gov/>

Land ownership and status on this map are depicted at section- or township-level resolution. Base map data, including hydrologic data, village and town locations, land status and boundaries, etc. are from geospatial data maintained by the Department of Natural Resources Support Services Division and Division of Oil and Gas. Base map data are in North American Datum 1983, Alaska Albers projection. The use of multiple data sets from varying sources may result in discrepancies in boundary alignments.