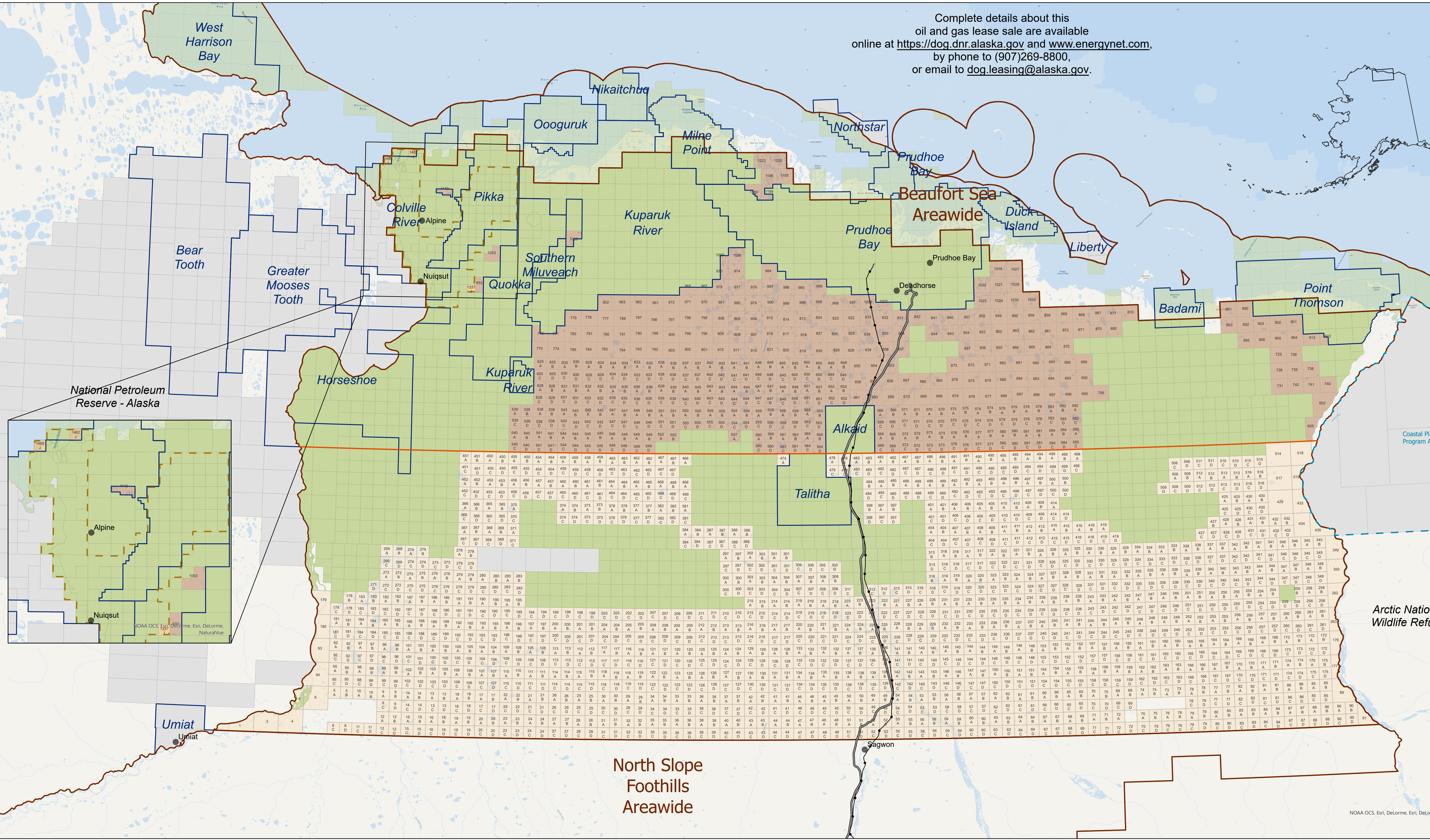




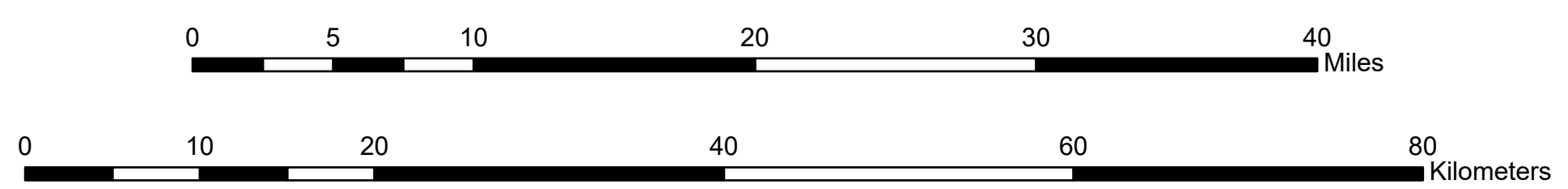
Complete details about this oil and gas lease sale are available online at <https://dog.dnr.alaska.gov> and [www.energy.net.com](http://www.energy.net.com), by phone to (907)269-8800, or email to [dog.leasing@alaska.gov](mailto:dog.leasing@alaska.gov).



- Trans-Alaska Pipeline System
- Dalton Highway
- Royalty Line
- Areawide Boundary
- Unit Boundary
- State/ASRC Settlement Area
- Coastal Plain Program Area
- Issued State Lease
- Issued State Lease in Adjacent Areawide
- Issued Non-State Lease
- Available Lease Sale Tract
- North Sub-Region Tracts
- South Sub-Region Tracts
- State/ASRC Tracts



State of Alaska  
Department of Natural Resources  
**DIVISION OF OIL AND GAS**  
**North Slope Areawide 2022W**  
**Competitive Oil and Gas Lease Sale Tract Map**  
September 12, 2022



The regional tract map depicts issued oil and gas leases and lease sale tract boundaries. Land status and boundaries are subject to change. Bidders are cautioned to verify land title, land available for leasing, and acres within a tract prior to bidding. This map is not intended to provide a detailed depiction of land status or ownership interests. For land status, ownership, and land survey information consult land records of the following agencies:

- Alaska Department of Natural Resources <http://dnr.alaska.gov/landrecords>
- US Bureau of Land Management <https://sdms.ak.blm.gov>
- US Bureau of Ocean and Energy Management [www.boem.gov/alaska-ocs-region](http://www.boem.gov/alaska-ocs-region)

Data on this map are depicted at section- or township-level resolution. Base map data are from geospatial data maintained by the Department of Natural Resources and are available at <https://dog.dnr.alaska.gov/Information/MapsAndGIS>. Base map data are in North American Datum, Alaska Albers projection. The use of multiple datasets from varying sources may result in discrepancies in coincident boundaries.

The State of Alaska makes no expressed or implied warranties (including warranties of merchantability and fitness) with respect to the character, function, or capabilities of this product or its appropriateness for any user's purposes. In no event will the State of Alaska be liable for any incidental, indirect, special, consequential, or other damages suffered by the user or any other person or entity whether from use of the product, any failure thereof or otherwise, and in no event will the State of Alaska's liability to a user exceed the fee for the product.

NOAA OCS, Esri, DeLorme, Esri, DeLorme, NaturaVue