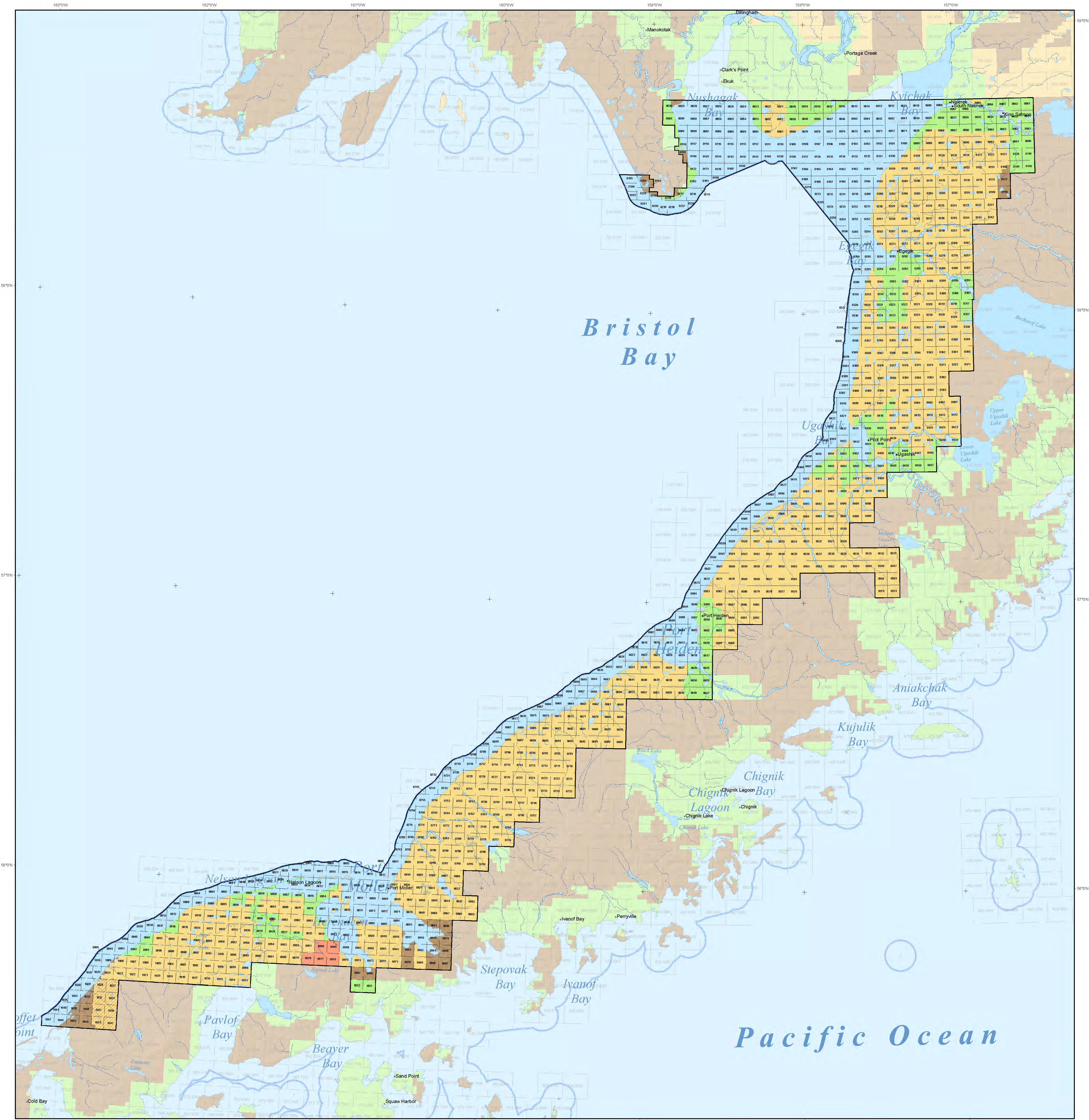


Oil and Gas Lease Sale

Alaska Peninsula Areawide 2009

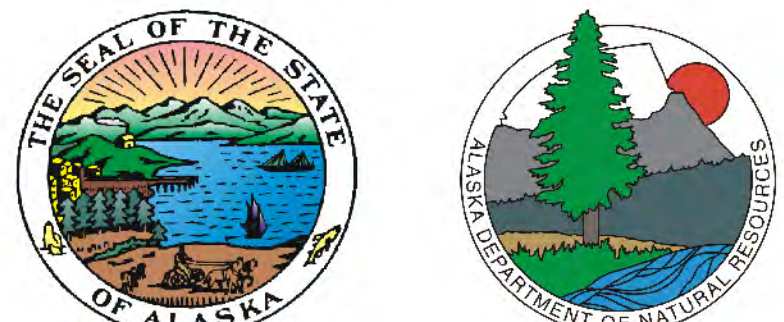


This map was created, edited, and published by the State of Alaska, Department of Natural Resources, Division of Oil and Gas, and is for informational purposes only.

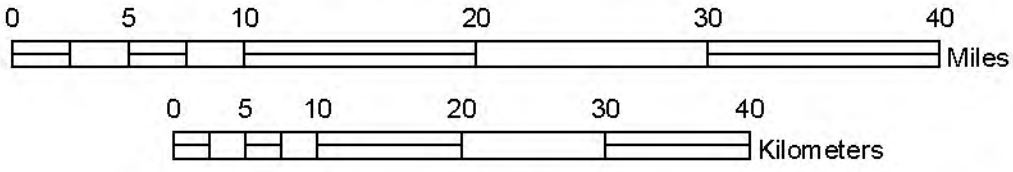
The state of Alaska makes no expressed or implied warranties (including warranties of merchantability and fitness) with respect to the character, function, or capabilities of this product or its appropriateness for any user's purposes. In no event will the State of Alaska be liable for any incidental, indirect, special, consequential or other damages suffered by the user or any other person or entity whether from use of the product, any failure thereof or otherwise, and in no event will the State of Alaska's liability to you or anyone else exceed the fee for the product.



State of Alaska
Department of Natural Resources
Division of Oil and Gas



Scale: 1:525,000



Alaska Albers Equal Area Conic
False Easting: 0.000000
Central Meridian: -159.300000
Standard Parallel 2: 65.000000

GCS North American 1983
False Northing: 0.000000
Standard Parallel 1: 55.000000
Latitude of Origin: 50.000000

Legend

- Sale Boundary
- Sale Tracts
- 0001 State Acreage Available for Lease
- State Acreage Deferred from Sale
- State Acreage Currently Leased
- Federal Lands
- Native Lands
- Alaska Seaward Boundary

DATA SOURCES

Base map data, including hydrologic data, village and town locations, land status and boundaries, etc. are from the State of Alaska Statewide Land Records Information Systems GIS database. Oil and gas wells are from the Alaska Division of Oil and Gas database as adapted from the Alaska Oil and Gas Conservation Commission dataset. Land status is derived from the Federal Bureau of Land Management's general land status dataset.

Information on this map is depicted only at a township or section level resolution. For detailed information regarding any specific area, interested individuals may consult the land records of one or more of the following agencies:

The State of Alaska, Dept of Natural Resources
The Federal Bureau of Land Management
The Federal Minerals Management Service

Discrepancies in boundary alignments are the result of merging multiple data sets from a number of different sources.

Bidders are solely responsible for determining the availability of acreage prior to submitting a bid.