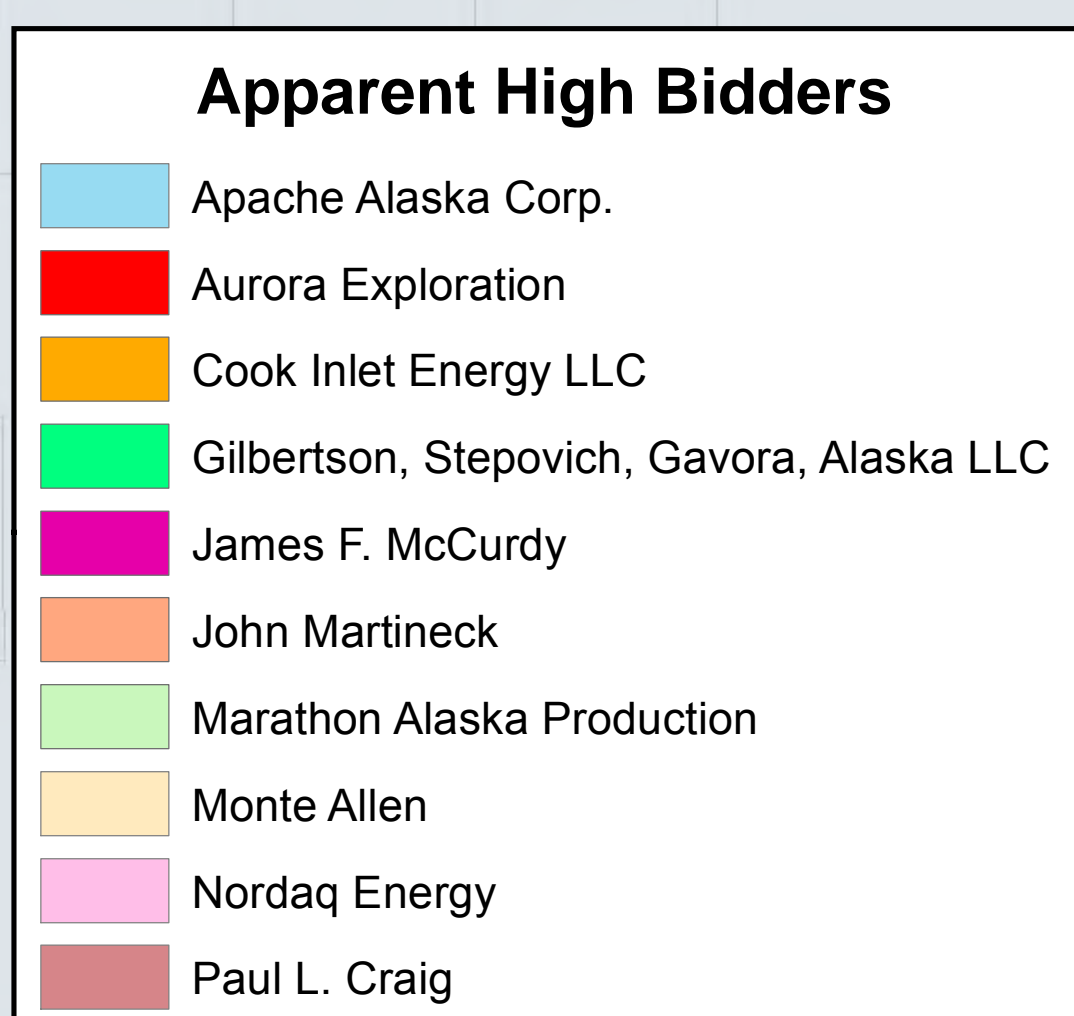
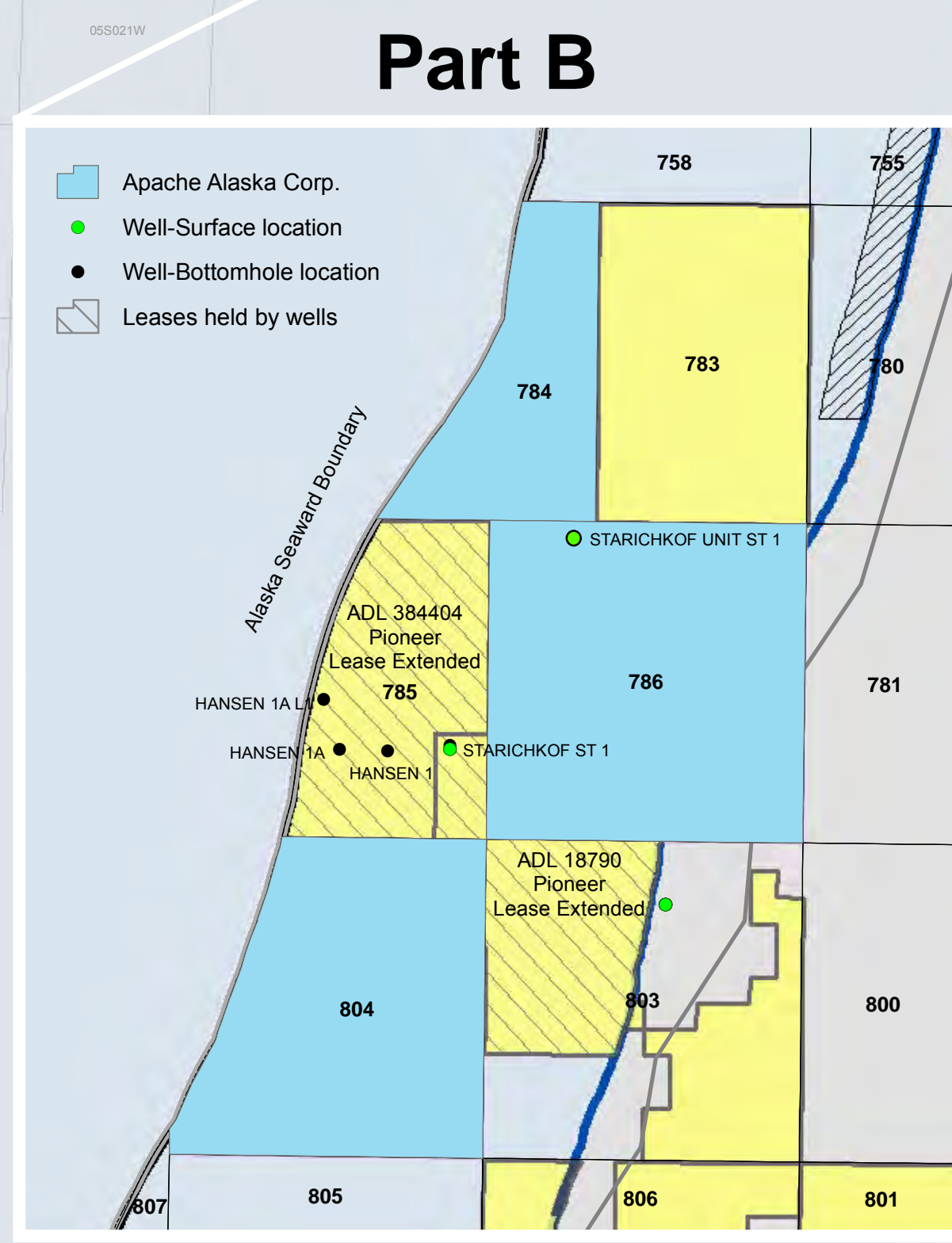
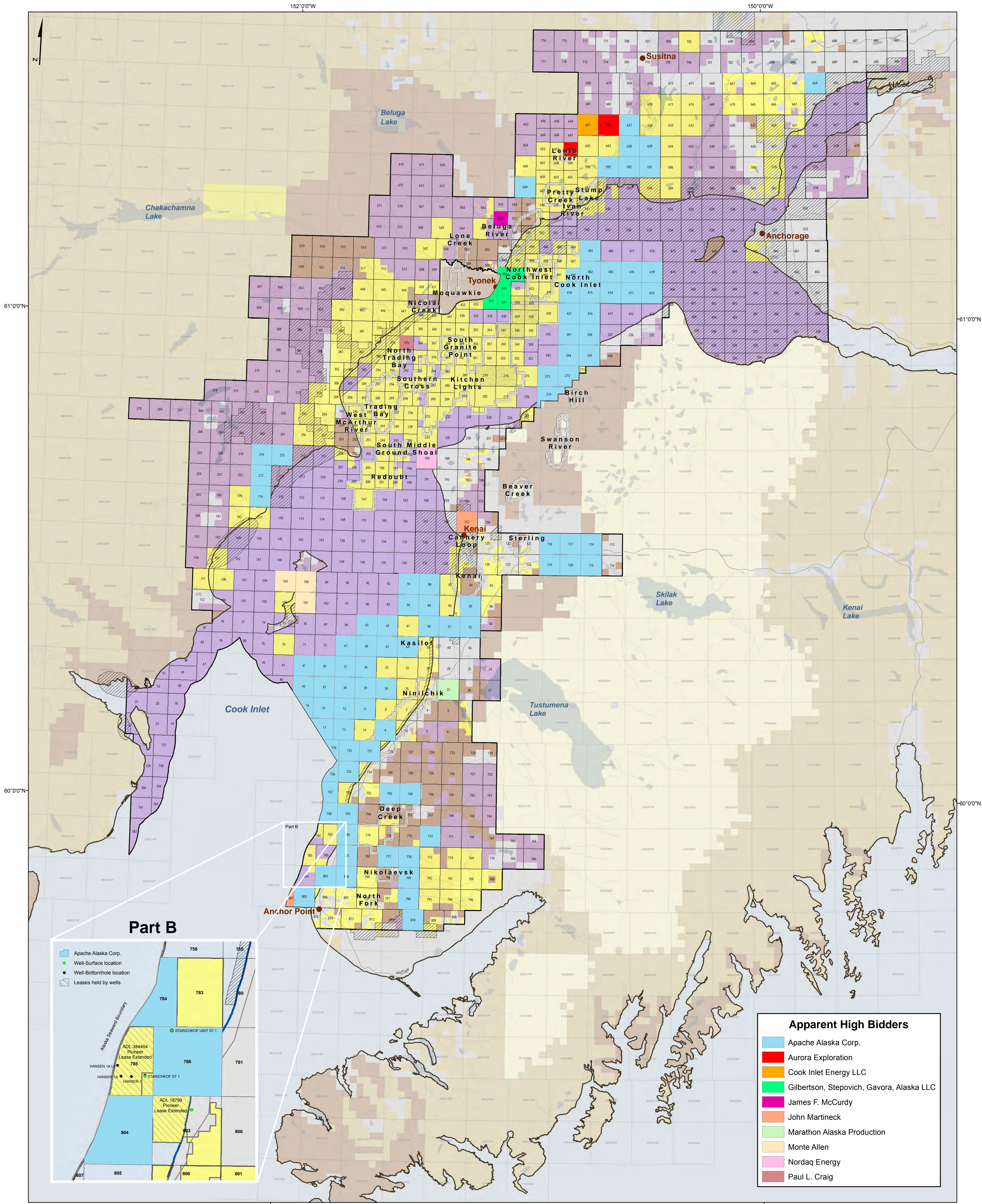


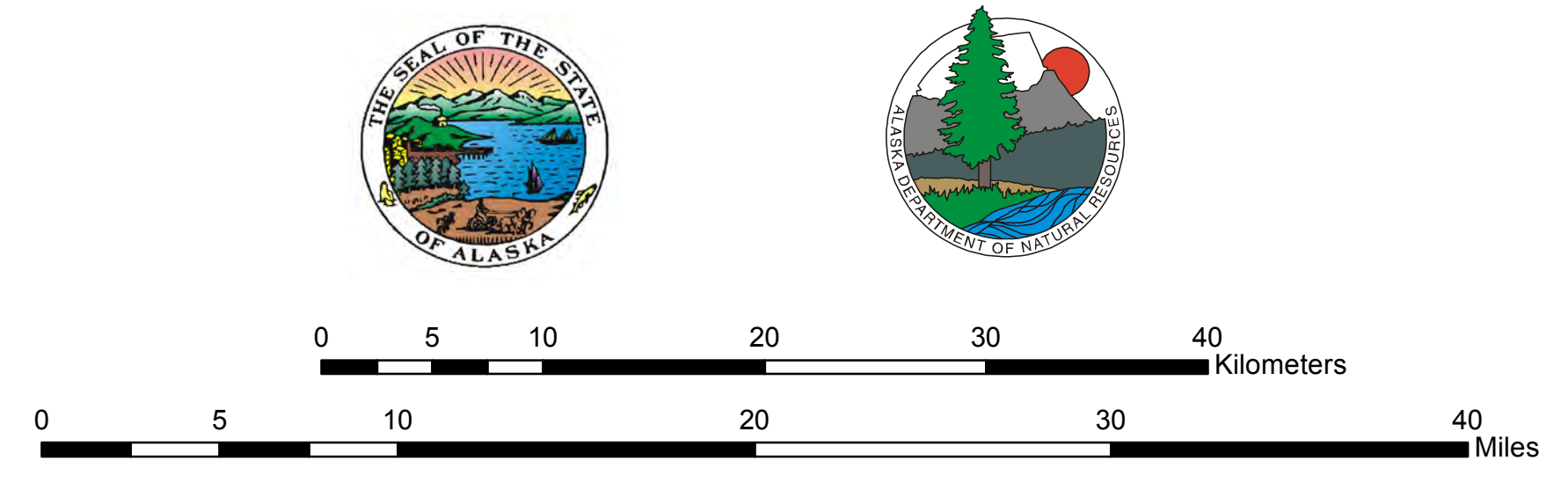
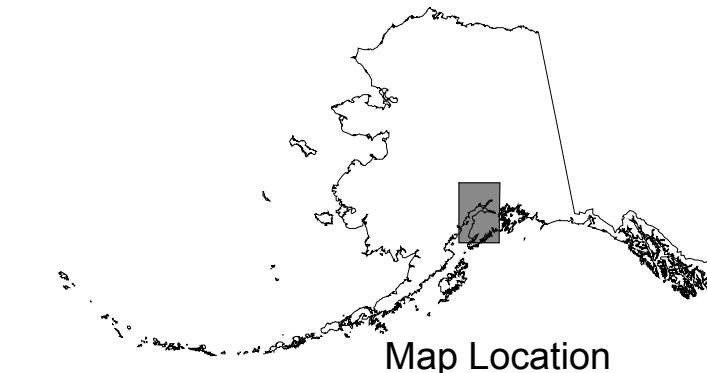
Cook Inlet Areawide Lease Sale 2011

Part A & Part B



This map was created, edited, and published by the State of Alaska, Department of Natural Resources, Division of Oil and Gas, and is for informational purposes only.

The State of Alaska makes no expressed or implied warranties (including warranties of merchantability and fitness) with respect to the character, function, or capabilities of this product or its appropriateness for any user's purposes. In no event will the State of Alaska be liable for any incidental, indirect, special, consequential or other damages suffered by the user or any other person or entity whether from use of the product, any failure thereof or otherwise, and in no event will the State of Alaska's liability to you or anyone else exceed the fee for the product.



DATA SOURCES

Base map data, including hydrologic data, village and town locations, land status and boundaries, etc. are from the State of Alaska Statewide Land Records Information Systems GIS database. Oil and gas wells are from the Alaska Division of Oil and Gas database as adapted from the Alaska Oil and Gas Conservation Commission dataset. Land status is derived from the Federal Bureau of Land Management's general land status dataset.

Information on this map is depicted only at a township or section level resolution. For detailed information regarding any specific area, interested individuals may consult the land records of one or more of the following agencies:

The State of Alaska, Dept. of Natural Resources
 The Federal Bureau of Land Management
 The Federal Minerals Management Service
 Arctic Slope Regional Corporation

Discrepancies in boundary alignments are the result of merging multiple data sets from a number of different sources.

Preliminary Sale Results

Apparent High Bidders

June 22, 2011