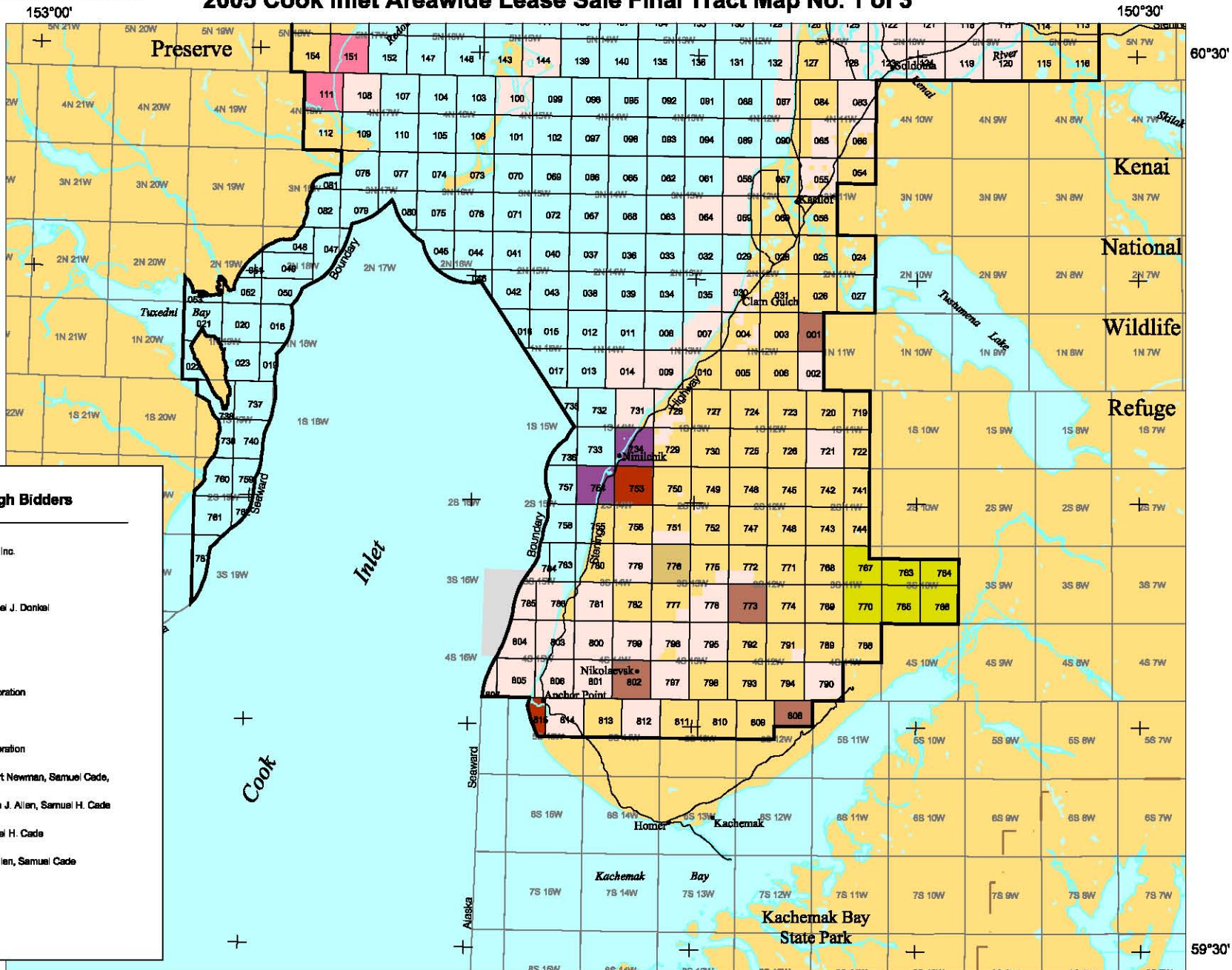


2005 Cook Inlet Areawide Lease Sale Final Tract Map No. 1 of 3



Apparent High Bidders

- Alaska Energy Alliance, Inc.
- Aurora Gas, LLC
- Daniel K. Donkel & Daniel J. Donkel
- Escopeta Oil CO., LLC
- Forest Oil Corporation
- Rutter & Wilbanka Corporation
- Joseph W. Shaehan
- Storm Cat Energy Corporation
- Daniel K. Donkel, Robert Newman, Samuel Cade, H. Jerry Hodgden
- Daniel K. Donkel, Monte J. Allen, Samuel H. Cade
- Daniel K. Donkel, Samuel H. Cade
- Daniel Donkel, Monte Allen, Samuel Cade

Final Tract Map
No. 1 of 3

153°00'

Scale 1:700,000 One Inch = 11 Miles Approx.

150°30'



CIAW Sale Boundary

Acreage Withdrawn (from CIAW 2005).

Currently Leased State Acreage (As of 2-8-05).

Currently Leased Federal Acreage (As of 2-8-05).

This Is Not An Official Tract Map. For Informational Purposes Only.

Albers Equal-Area Conic Projection, 1927 North American Datum, Clarke 1866 ellipsoid with a central meridian of 151° 45', origin latitude of 50°, northern parallel of 65°, and southern parallel of 55°.



2005 Cook Inlet Areawide Lease Sale Final Tract Map No. 2 of 3

153°00'

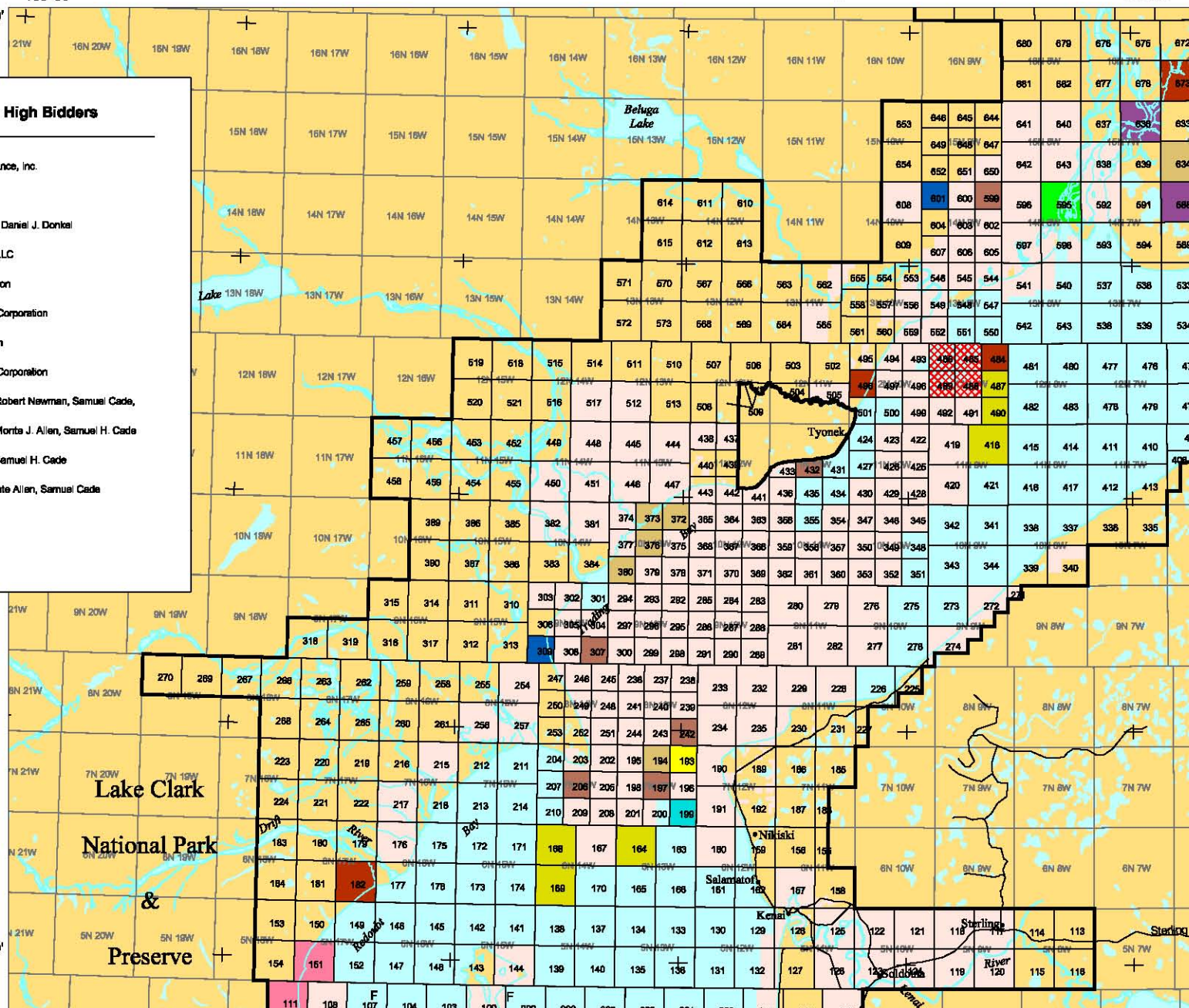
150°30'

61°30'

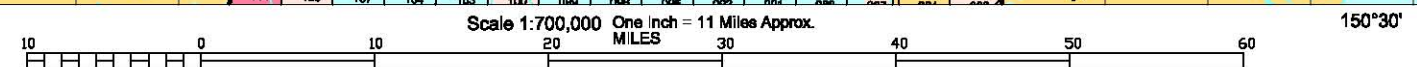
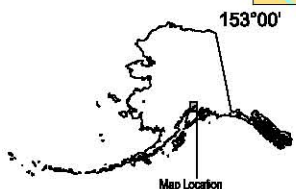
61°30'

Apparent High Bidders

- Alaska Energy Alliance, Inc.
- Aurora Gas, LLC
- Daniel K. Donkel & Daniel J. Donkel
- Escopeta Oil CO., LLC
- Forest Oil Corporation
- Rutter & Wilbanks Corporation
- Joseph W. Sheehan
- Storm Cat Energy Corporation
- Daniel K. Donkel, Robert Newman, Samuel Cade, H. Jerry Hodgden
- Daniel K. Donkel, Monte J. Allen, Samuel H. Cade
- Daniel K. Donkel, Samuel H. Cade
- Daniel Donkel, Monte Allen, Samuel Cade



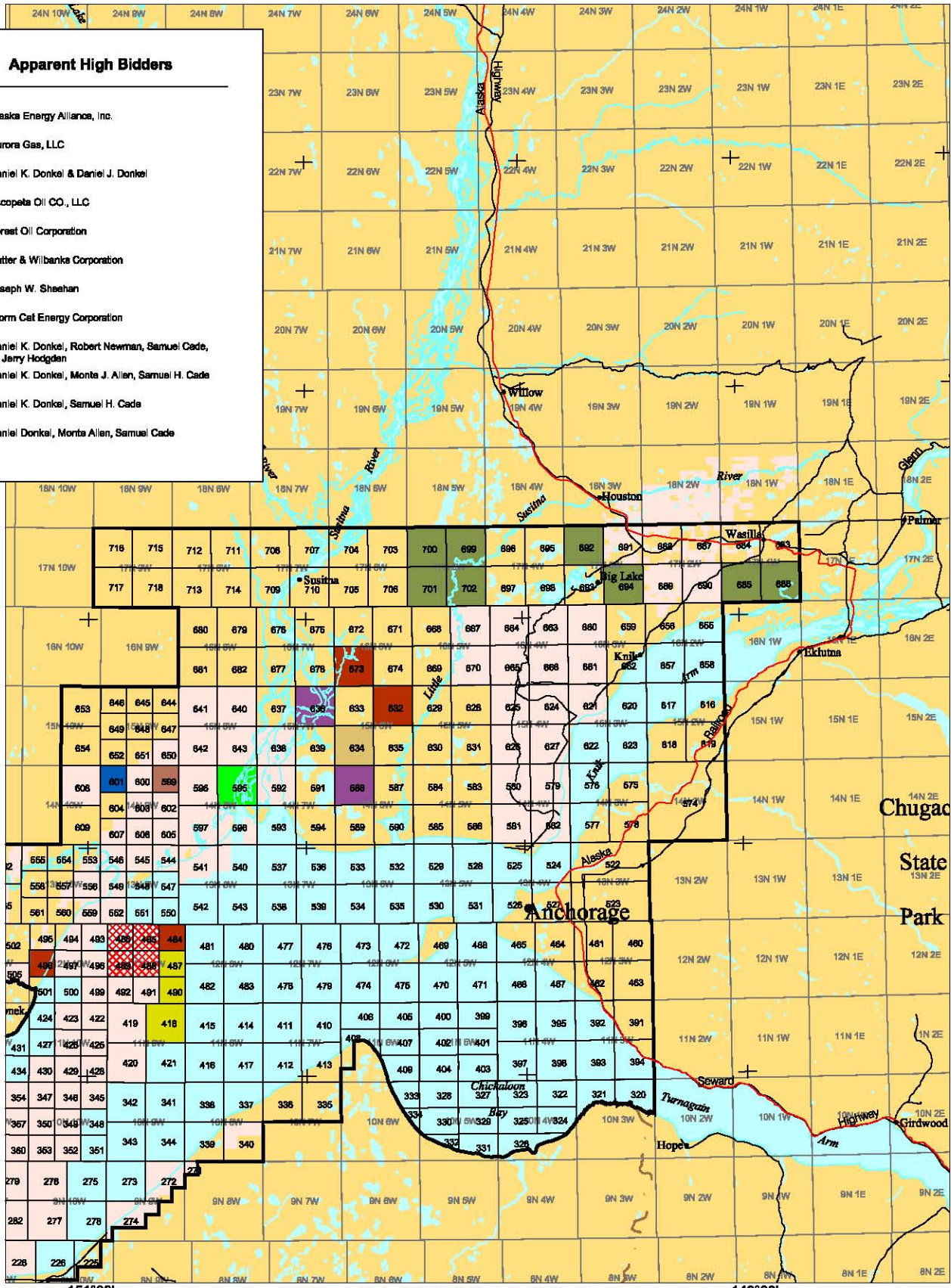
Final Tract Map
No. 2 of 3



- CIAW Sale Boundary
- Acreage Withdrawn (from CIAW 2005).
- Currently Leased State Acreage (As of 2-8-05).
- Currently Leased Federal Acreage (As of 2-8-05).

This is Not An Official Tract Map. For Informational Purposes Only.

Albers Equal-Area Conic Projection, 1927 North American Datum, Clarke 1866 ellipsoid with a central meridian of 151° 45', origin latitude of 50°, northern parallel of 65°, and southern parallel of 55°.



Apparent High Bidders

- Alaska Energy Alliance, Inc.
- Aurora Gas, LLC
- Daniel K. Donkel & Daniel J. Donkel
- Escopeta Oil CO., LLC
- Forast Oil Corporation
- Rutter & Wilbanks Corporation
- Joseph W. Sheehan
- Storm Cat Energy Corporation
- Daniel K. Donkel, Robert Newman, Samuel Cade, H. Jerry Hodgden
- Daniel K. Donkel, Monte J. Allen, Samuel H. Cade
- Daniel K. Donkel, Samuel H. Cade
- Daniel Donkel, Monte Allen, Samuel Cade

Final Tract Map
No. 3 of 3



Legend:

- CIAW Sale Boundary
- Acreage Withdrawn (from CIAW 2005).
- Currently Leased State Acreage (As of 2-8-05).
- Currently Leased Federal Acreage (As of 2-8-05).

This is Not An Official Tract Map. For Informational Purposes Only.

Albers Equal-Area Conic Projection, 1927 North American Datum, Clarke 1866 ellipsoid with a central meridian of 151° 45', origin latitude of 50°, northern parallel of 65°, and southern parallel of 55°.