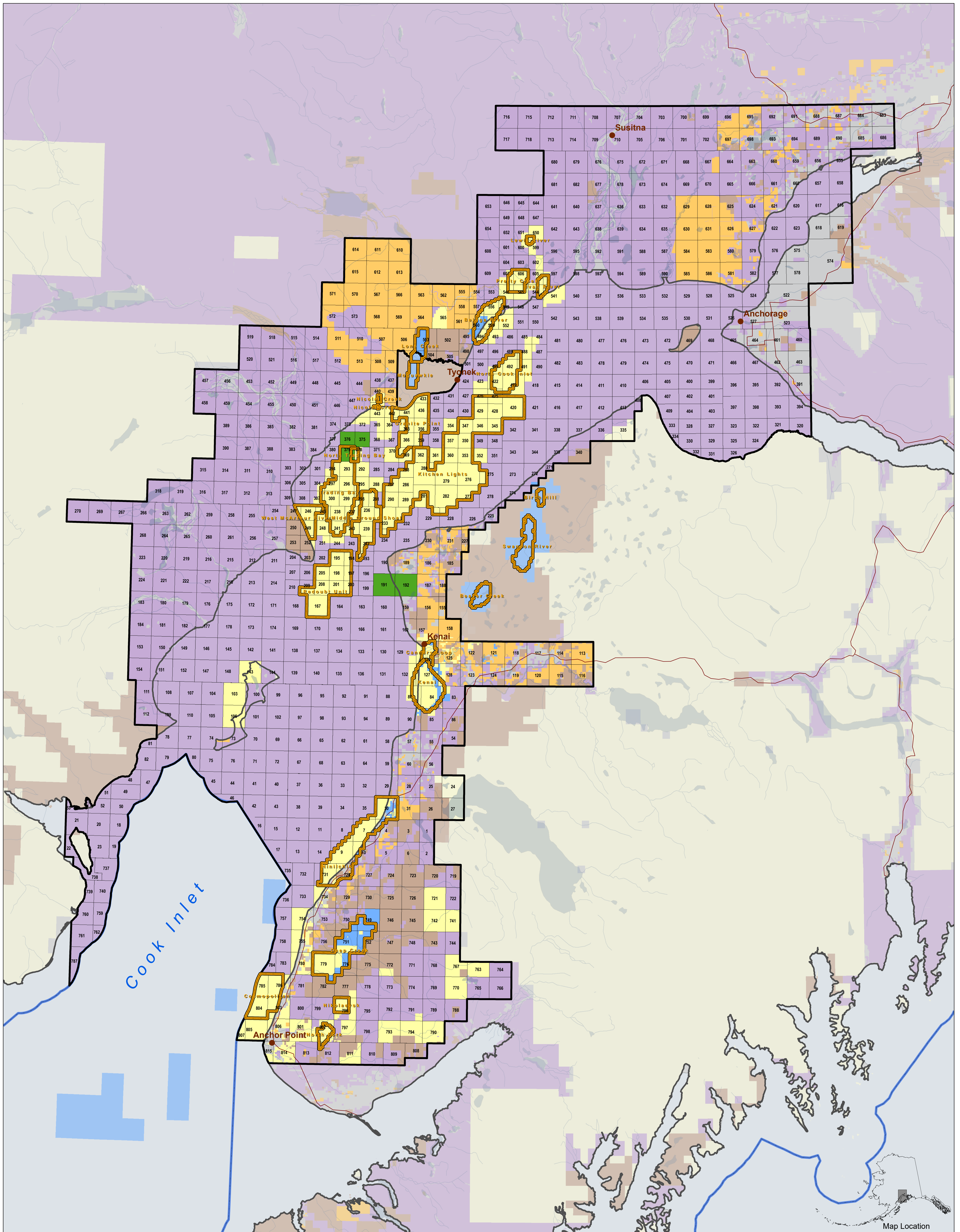


# Cook Inlet Areawide 2019W

## Competitive Oil and Gas Lease Sale Regional Tract Map

May 6, 2019



Map Location

This map was created, edited, and published by the State of Alaska, Department of Natural Resources, Division of Oil and Gas, and is for informational purposes only.

The state of Alaska makes no expressed or implied warranties (including warranties of merchantability and fitness) with respect to the character, function, or capabilities of this product or its appropriateness for any user's purposes. In no event will the State of Alaska be liable for any incidental, indirect, special, consequential or other damages suffered by the user or any other person or entity whether from use of the product, any failure thereof or otherwise, and in no event will the State of Alaska's liability to you or anyone else exceed the fee for the product.

Printed copies of the Lease Sales Tract maps can be ordered for \$50. To order call Asset Management Section at (907)269-8800 or email [dog.leasing@alaska.gov](mailto:dog.leasing@alaska.gov)

- Unleased State Owned Oil and Gas
- Deferred Tract
- Current State Oil and Gas Lease
- Lease Sale Tract
- Unit Boundary
- Non-State Oil and Gas Leases
- Areawide Boundary
- Federal Land
- Native Land
- Other Ownership
- Alaska Seaward Boundary

Bidders are cautioned to verify land title, land available for leasing, and acreage within a tract prior to bidding. The regional tract map depicts general mineral estate ownership, oil and gas lease activity, and lease sale tract boundaries and is subject to change. This map is not intended to provide a detailed depiction of land status or ownership interests. For land status, ownership, and land survey information consult land records of the following agencies:

State of Alaska Department of Natural Resources  
<http://dnr.alaska.gov/Landrecords/>

US Department of Interior Bureau of Land Management  
<http://sdms.ak.blm.gov>

Land ownership and status on this map are depicted at section- or township-level resolution. Base map data, including hydrologic data, village and town locations, land status and boundaries, etc. are from geospatial data maintained by the Department of Natural Resources Support Services Division and Division of Oil and Gas. Base map data are in North American Datum 1983, Alaska Albers projection. The use of multiple data sets from varying sources may result in discrepancies in boundary alignments.



**Bidders are solely responsible for determining the availability of acreage prior to submitting a bid.**

**Various state and federal restrictions apply to portions of the lease sale area.**

**Complete details regarding this lease sale are available on the Division of Oil and Gas website: <http://dog.dnr.alaska.gov>**